



Melt Flow Measurement System (OP5)

The OCS Melt Flow Measurement System (OP5) allows the measurement of the Melt Index (MI) of polymer powder or pellet samples.

The time between sampling and measurement is 5 to 10 minutes. The OP5 melt process minimises any changes in the structure of the polymer by providing a very fast transition from solid to liquid without the negative effects of an extruder screw.

The OP5 MFR measurement process is carried out by means of exact control of the melt flow in combination with a highly precise, OCS-developed melt-pressure measurement technique. This method typically achieves a reproducibility of +/- 1%. The fast sampling reduces the delay time between laboratory and production considerably.

Testable Raw Materials

- Pellets
- Powder

Features

- Fast sample preparation and measurement
- Real-time results in 5 to 10 minutes
- High reproducibility
- One-time ISO calibration per material type and measurement range
- Real-time display via touch panel with data trends as well as optical and acoustic alarm functions
- Measurement results according to ISO1133 and ASTM D1238

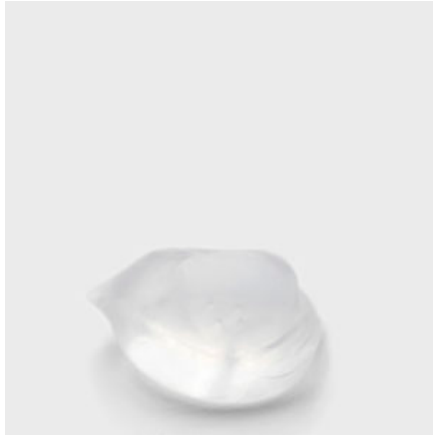
Sales Team



T +49 2302 95622-0
F +49 2302 95622-33
info@ocsgmbh.com
www.ocsgmbh.com

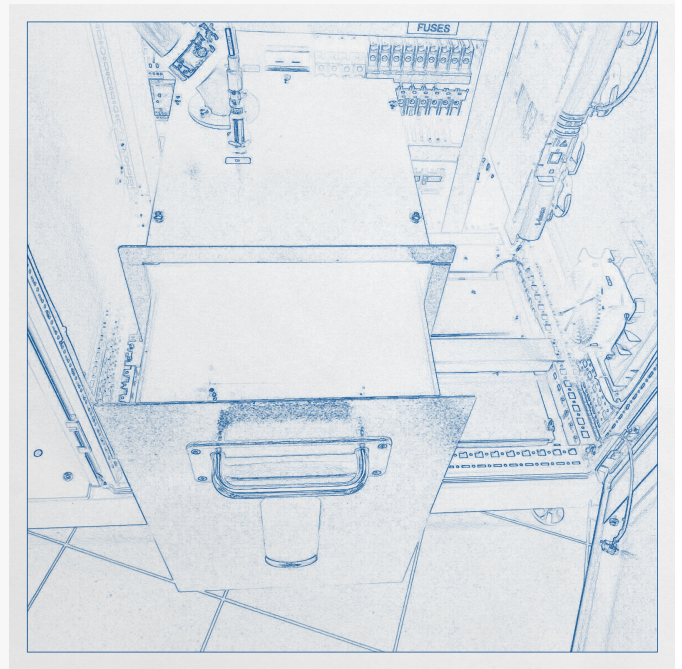
Address

OCS Optical Control Systems GmbH
Wullener Feld 24
58454 Witten
Germany

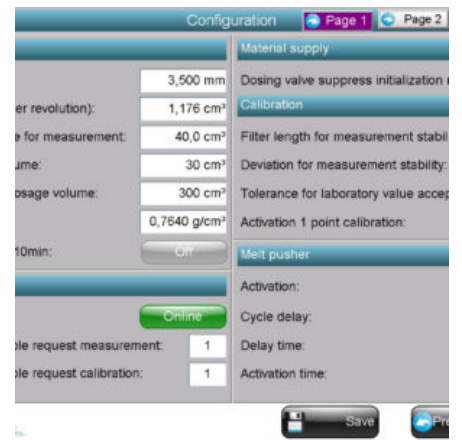
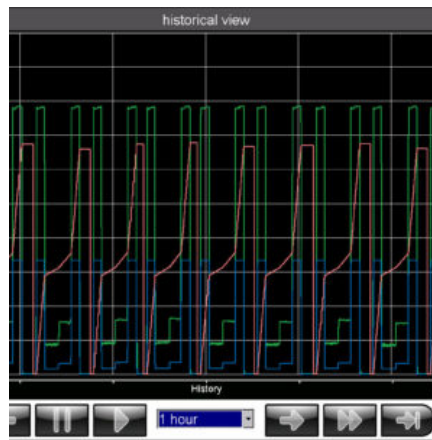


Technical Details

Melt flow range	0.05–1000 cm ³ /10 min
Test temperature	Up to 240°C
Reproducibility	+/- 1%
Pellet / powder consumption	Approx. 0.6 kg/h
Communication protocol	MODBUS (RTU, TCP/IP), PROFIBUS, PROFINET, OPC (Server/Client), CSV file, customer-specific



More Product Pictures



Similar Products



Pellet Transport System (PTS)

The OCS Pellet Transport System (PTS) is a control system that ensures the continuous and automatic transport of plastic granules (pellets) between production lines and measuring systems. The pellets from the production line are removed by pneumatic samplers. The samples are transported through special conveyor pipes, distributed and fed to the corresponding measuring system. This ensures a gentle transport of the pellets to avoid dust and streamers. Features Individual and fully automated transport system for supplying the measuring systems Enables timely readjustment in case of parameter variations (minimisation of scrap) Simple operation via touch panel with optical and ... [read more on our Website]

Images, drawings and data are non-binding and subject to modification without prior notice. © 2025. All rights reserved - OCS Optical Control Systems GmbH | Wullener Feld 24 | 58454 Witten, Germany